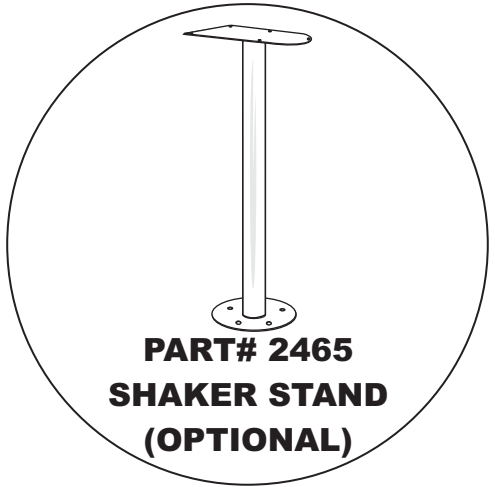
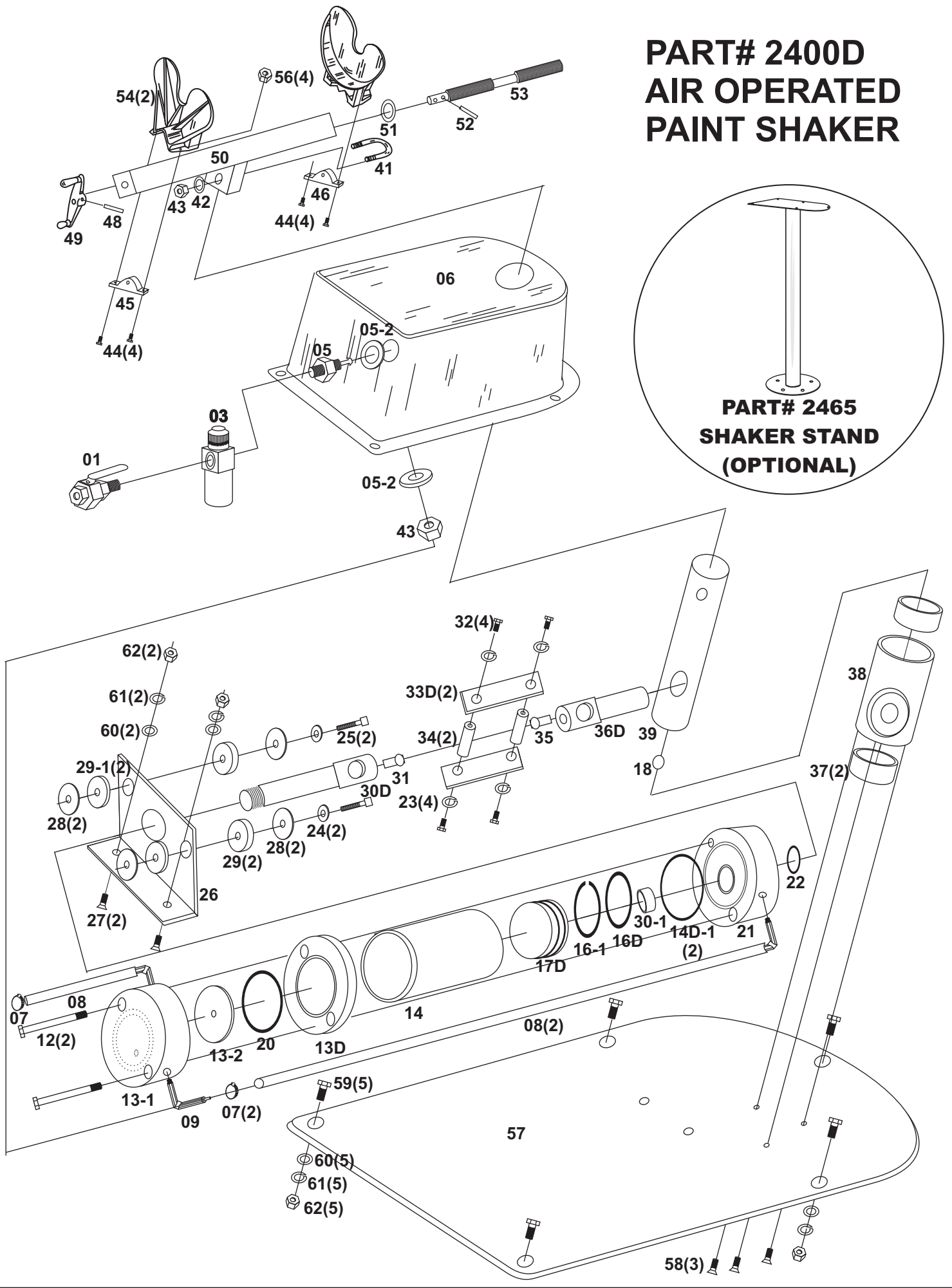


PART# 2400D AIR OPERATED PAINT SHAKER



Part #	Description	Qty
2401	Air Control Valve	1
2403	Automatic Oiler	1
2404	Brass Nipple	1
2405	Bulk Head Fitting	1
2405-2	1 1/16" OD x 1/2" ID	1
2406	Motor Cover	2
2407	Hose Clamp	2
2408	Air Hose Assembly	2
2409	Inlet Ell Fitting	2
2412	1/4" x 4"-20 Hex Cap Screw	2
2413D	Motor Back Plate	1
2413-1	Rear Valve Body	1
2413-2	Valve Disc	1
2414D	Motor Body	1
2414D-1	Motor Body O-Ring	2
2416D	Piston O-Ring	1
2416-1	Piston Wear Ring	1
2417D	Piston	1
2418	3/8" Ball Bearing	1
2420	Valve Body O-ring	1
2421	Motor Front Plate	1
2422	Motor Shaft O-Ring	1
2423	1/4" Lock Washer Zinc	4
2424	1/4" Flat Washer Zinc	2
2425	1/4" X 1 3/4" Socket Cap Bolt	2
2426	Motor Mounting Bracket	1
2427	5/16" X 1" Flat HD Socket Bolt	2
2428	1/4"x1" Fender Washer Zinc	4
2429	1" X 3/8" Rubber Bushing	4
2430D	Motor Shaft	1
2430D-1	Motor Shaft Bushing	1
2431	Zert-1/8" Drive	1

Part #	Description	Qty
2432	1/4" X 1/2"-20 Hex Tap Bolt	4
2433	Connector Bars	2
2434	Connector Pins	2
2435	57 Degree Zert-1/8" NPT	1
2436	Main Shaft Connector Rod	1
2437	Main Shaft Bushings	2
2438	Main Shaft Tube	1
2439	Main Shaft	1
2441	5/16" U Bolt Zinc	1
2443	5/16"-14 Hex Lock Nut Zinc	2
2444	3/8" x 1 1/4"-16 Hex Tap Bolt	1
2445	Clamp Nut (LH)	1
2446	Clamp Nut (RH)	1
2448	Handle Roll Pin	1
2449	Clamp Handle	1
2450	Clamp Frame	1
2451	7/16" SAE Flat Washer	1
2452	Clamp Screw Roll Pin	1
2453	Clamp Screw	1
2454	Jaw	2
2455	3/8" Lock Washer Zinc	4
2456	3/8"-18 Hex Nut Zinc	4
2457D	Shaker Base Plate	1
2458	#10x5/8" Flat HD Socket Bolt	3
2459	5/16" X 1"-18 Hex Tap Bolt	5
2460	5/16" SAE Flat Washer	7
2461	5/16" Lock Washer	7
2462	5/16"-18 Hex Nut Zinc	7
2463	Motor Complete	
2464	Main Shaft Tube Assembly	
2465	Paint Shaker Stand	